



The Sheri and Les
BILLER FAMILY FOUNDATION

Annual Report **2023**

A Letter from Our Founders

Dear Partners and Friends,

2023 was a year of growing and deepening partnerships for our foundation. More than ever, we are excited by the opportunity to create equitable change. We advance our mission by increasing access to systems and solutions that expand economic opportunity, improve access to supportive care for life-threatening illness, and lift up social impact theatre.

Since launching the Foundation in 2001, we have worked to improve people's lives in real and meaningful ways. We hope you see that commitment reflected in the pages that follow.

In this time of uncertainty and global conflict, we look to 2024 with a renewed sense of commitment to our values of opportunity, collaboration, access, and equity. The tireless work, passion, and vision of our grantees and partners make us optimistic about the continued impact we can have together.

While this Annual Report reflects the Foundation's accomplishments in 2023, we also spent much of the year researching, speaking to leaders and potential partners, and planning a cross-sector summit to make early, equitable access to supportive cancer care a national standard. We are very excited to share that work with you, and invite your support, over the course of 2024.

With gratitude,

Sheri & Les Biller



A Message from Our CEO

In 2023, the Sheri & Les Biller Family Foundation celebrated our 22nd anniversary. Since The Billers launched the Foundation with a goal of driving equitable access to opportunity, the Foundation has supported organizations across the country doing impactful work in their communities. We have expanded our partnerships and collaborations with leaders and organizations who are models of equitable access:

- Expanding our investments to City of Hope, which provides a model of supportive cancer care, and working in partnership with the Foundation to **make early, ongoing access to supportive care the national standard for cancer care**;
- Building new partnerships with nine national and community organizations focused on advancing healthy equity;
- Increasing the number of Career & Technical Education classes, student enrollment, and expanded career pathways for students who want to go directly to a career following their high school graduation;
- and, Sustaining our annual **Social Impact Theatre Grant Program**, which provides production support for theatres in Western states igniting positive changes in their communities and continuing our support of eight Black theatres, Indigenous theatres, and theatres of color (BITOC) in the Western US.
- Continuing our almost two decades of support for **CareerWork\$**, which saw a 40 percent increase in participants and graduates since 2020.

As always, I am endlessly grateful to our team members, grantees, and partners for the work you do every day to create lasting, positive, and equitable change in communities across the country. More than ever, I am in awe of the work you do - and excited about the impact we can have together.

Sincerely,

Audrey Haberman

Chief Executive Officer



Our Belief: We believe that everyone deserves access to systems and solutions that expand economic opportunity, supportive care for life-threatening illnesses, and the transformative power of the arts.

Values

1 Collaboration

We see our grantees as partners and strive to ensure all the strengths and assets available are brought to bear for the greater good so that innovation flourishes, the outcomes are stronger, and the impact ripples.

2 Opportunity

Our sense of optimism about what is possible encourages us to take chances on good ideas—to try something and even fail—as this is often the best way to learn and to create change.

3 Access and Equity

We believe that individuals deserve personal and systemic opportunities to access what they need to lead healthy and economically stable lives. We understand that people and communities need different forms of access, so we pay attention to equitable solutions.



Focus Areas

Economic Opportunity

We advance solutions that expand equitable access to economic opportunity through a focus on workforce development programs and career technical education.

Supportive Cancer Care

A whole-person, wrap-around form of cancer care that addresses the psychosocial and spiritual needs of patients and loved ones facing cancer and other life-threatening diseases. Supportive care is fully integrated into clinical care, from intake and throughout the treatment process.

Social Impact Theatre

Our investments are guided by the fundamental belief in the power of live theatre to spark dialogue, bring different viewpoints together on challenging subjects, and provide a lens to process the critical issues of contemporary society. We proudly recognize organizations in the Western states that are intentional and innovative in engaging with their audiences around these issues and are committed to reaching new audiences.

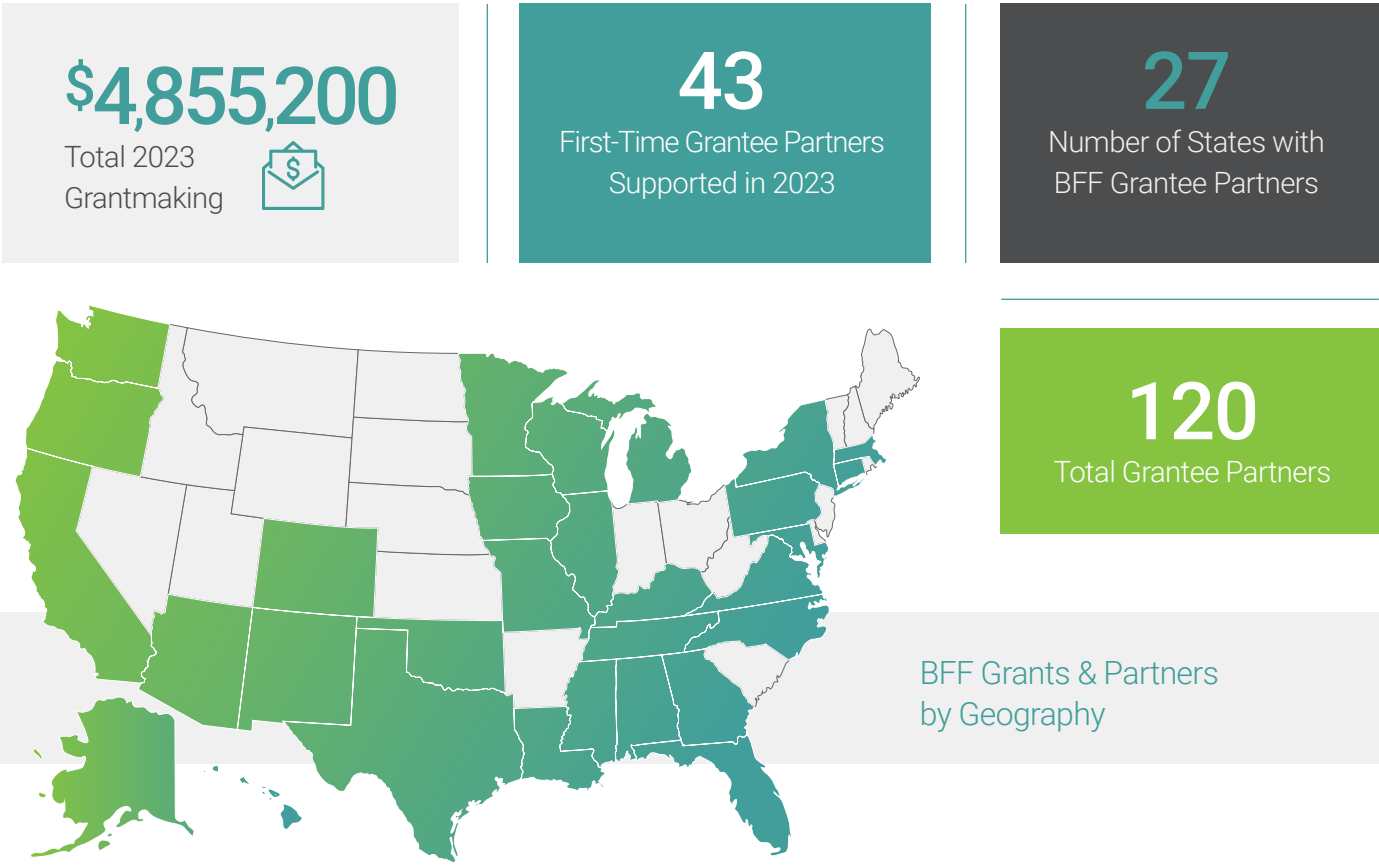
Staff

Angad Shah Controller	Dean Frerker Vice President & Chief Financial Officer	Lené Copeland Foundation Associate
Audrey Haberman Chief Executive Officer	Geri Auriemma Grants Manager	

Board of Directors

Howard Behar	Sarah J. Lyding	John R. Ohanesian
Yvonne Bell	Pedro J. Marti	Richard M. Powell
Lindsey C. Kozberg		

2023 at a Glance





Focus Area

Economic Opportunity

Program Summary

We advance solutions that expand equitable access to economic opportunity through a focus on workforce development programs and career technical education.

CareerWork\$

We invest in CareerWork\$, a national workforce development nonprofit with the mission of connecting young adults from under-resourced communities to stable, lasting careers through free training in banking and healthcare. CareerWork\$ offers free training for entry level banking and non-clinical medical roles, and then connects its graduates with employers who are looking for their talent and the skills and training to succeed. CareerWork\$ also provides community organizations with a program called CareerWork\$ Ready, which offers virtual or in-person training for job seekers in underserved communities who would like help with resume writing, interview skills, and other aspects of finding and keeping a job.

CareerWork\$ training partners include:

A New Leaf Phoenix, AZ	Dallas College Dallas, TX	Goodwill of Colorado Denver, CO	Philadelphia OIC Philadelphia, PA	Association House of Chicago Chicago, IL
Employ Milwaukee Milwaukee, WI	JVS SoCal Los Angeles, CA	Worksystems, Inc./SE Works Portland, OR	Career Path Services South Puget Sound, WA	Fremont Adult and Continuing Education Bay Area, CA
OIC of South Florida Ft. Lauderdale, FL	Partner4Work/EIC Pittsburgh, PA	Partner4Work/EIC Pittsburgh, PA	YWCA Seattle King Snohomish Seattle, WA	Goodwill Industries of the Southern Piedmont Charlotte, NC

Career Connected Learning

We support and partner with innovative programs that help students move from high school to a career. In 2023, we made significant investments in the Educational Service Districts based in Yakima and Vancouver, WA and also supported students in the surrounding counties. Career connected learning includes pathways in Career and Technical Education (CTE) career readiness, financial education, and student achievement. CTE provides students with rigorous, industry specific training that results in a clear pathway to living wage careers. The grants were used to expand the number of CTE classes available and for staff to help create awareness and support for students and their families who want to choose this path. ESD 105 and 112 successfully increased the opportunities to access CTE as well as expanding partnerships with local employers for summer internships and post-graduation hiring. Partnership for LA Schools advocated for more equitable resources and education for some of the Los Angeles Unified School District’s high- and highest-need schools, and Operation Hope provided almost 200,000 financial coaching sessions and supported over 130,000 Black business owners.

Grantees	CareerWork\$	Operation Hope
	Educational Service District 105	Partnership for Los Angeles Schools
	Educational Service District 112	

Grantee Partner Spotlight

In Central Washington State, Educational Service District 105 Helps Build Pathways to High-Demand, Family-Wage Careers for Students Like Amaya Hernandez and Emilio Guerrero

In Washington State, Educational School Districts (ESDs) are one of four pillars of the K-12 education system, which also includes local school districts, the Office of Superintendent of Public Instruction, and the State Board of Education. While public entities, they are primarily self-supporting organizations that receive the vast majority of their funding from sources like federal and philanthropic grants. Their role is to provide shared services to local school districts to advance equity in educational opportunities,

Educational Service District 105 supports the learning success of more than 66,000 students who attend the 25 public school districts and more than 23 state-approved private and tribal schools in South Central Washington.

Today, their work spans Yakima and Kittitas Counties and parts of Klickitat and Grant Counties, as well as nine school districts located on the Yakama Nation Reservation. With support from the Foundation, in 2023 they added two new staff members and launched the pilot of their Career Academy, a six-to-ten-week program that provides in-school and out-of-school youth the opportunity to earn industry-recognized credentials, professional skills, and hands-on experience in an in-demand career pathway of their choosing. The program encompassed three key industry sectors: Advanced Manufacturing, Construction, and Pharmacy Assistant. Tailored for hands-on learning, the courses blended practical skill-based instruction, classroom engagement, and professional competencies.

Grantee Partner Spotlight

In Central Washington State, Educational Service District 105 Helps Build Pathways to High-Demand, Family-Wage Careers for Students Like Amaya Hernandez and Emilio Guerrero



2023 Construction Academy Graduate Amaya Hernandez, Who Will Attend The Perry Technical Institute's Construction Program in 2023

Amaya Hernandez was among the students who completed the 2023 Construction Academy, receiving her OSHA 10 Certification, Forklift Certification, Flaggers Certification, and First Aid and CPR – all while completing her GED. Now, she's excited to begin the Construction program at the Perry Technical Institute in March 2024.

"Last spring, I went on a tour at Perry Technical Institute's Construction Program with the ESD 105 Staff. It was then that I decided to pursue post-secondary education because it aligns perfectly with my lifelong passion for building and allows me to take deliberate steps forward to building a brighter future for myself. It wasn't until I had the opportunity to attend the Construction Academy that I realized just how profound my love for building truly is. Those eight weeks were transformative. They confirmed my decision that construction is not just a hobby; it's my calling."

At 28 **Emilio Guerrero** attended the Construction Academy highly motivated to achieve his goal of gaining the necessary skills to work in the construction industry. He has called the experience "life-changing." Today, he is thriving in his new construction career as a Construction Technician. With his new job, he has helped secure financial stability for his family and inspired his wife to continue her education in the health care field.



2023 Construction Academy Graduate Emilio Guerrero and His Family



Focus Area

Supportive Cancer Care

Program Summary

Supportive care is a comprehensive, evidence-based approach to care for people affected by serious illness, like cancer. Access to supportive care programs improves patients' lives and has a direct impact on patients' treatment outcomes, including a reduction in the length of inpatient stays, hospital readmissions, and ICU stays.

Supportive care ensures that people with cancer and their caregivers' needs are met at every step of their cancer journey in an individually tailored manner—including needs related to clinical, physical, and emotional health, as well as economic and environmental drivers of health.

Our definition of supportive care is a process that begins at intake, and provides patients with comprehensive physical, psychological, social and practical support services that improve outcomes and enable them to maximize their personal and family strengths. Services can include care navigation, survivorship programs, specialists in cancer and aging, psychological and spiritual counseling, pain management, integrative medicine like yoga, massage, meditation, and a range of family support and care.

We believe that supportive care should be an essential part of cancer care for every patient and family.

Supportive Care & Other Health-Related Grantees

Achievable Foundation

Alzheimer's Disease and Related Disorders Association, Inc.

American Cancer Society

Cancer Lifeline

Cancer Support Community

City of Hope

Coalition to Transform Advanced Care

CureCervicalCancer

Epilepsy Foundation of America

Fred Hutchinson Cancer Research Center

Healthpoint

King County Sexual Assault Resource Center

Latino Center for Prevention & Action in Health & Welfare

MHP Salud

Migrant Clinicians Network

National Minority Health Association

Parkinson's Foundation

Pause

Public Health Institute

University of Washington Foundation/Harborview's Sexual Assault Nurse Examiner Program

Venice Family Clinic



2023 Grantee Spotlight

City of Hope's Whole-Person, Supportive Care Model Helps A Young Metastatic Breast Cancer Patient Persevere

After an advanced breast cancer diagnosis in her early 30s, Sabrina got a second opinion at our partner City of Hope, a world-renowned research hospital offering a uniquely holistic and multidisciplinary clinical approach to supportive care medicine. That's where Sabrina found a team that took care of both her medical and emotional needs, including chemotherapy, financial aid resources, insurance assistance, help with utility bills and transportation, and legal counseling.

Nearly five years after being diagnosed, Sabrina's cancer remains "shrunk and stable," she has no symptoms, and her mobility has greatly improved — she is no longer wheelchair-bound.

"I'm living a normal life," says Sabrina. "I'm gardening. I'm painting. I'm exercising, taking community college classes....I know I can't be cured. I live with [cancer]. It's part of me, but not the whole me."

Read more about Sabrina's perseverance and the role of supportive care in her treatment [here](#).



Focus Area

Social Impact Theatre



Program Summary

Our investments are guided by the fundamental belief in the power of live theatre to spark dialogue, bring different viewpoints together on challenging subjects, and to provide a lens to process the critical issues of contemporary society. We proudly recognize organizations that are intentional and innovative in engaging with their audiences around these issues, and are committed to reaching new audiences. We support theatres in Western states that are igniting positive changes in their communities through the programming they bring to life on stage. We continue to pay attention to changes in the theatre sector and the social impact theatre space. We will be exploring new initiatives that address ideas to support different forms of social impact theatre, theatre career training, and a more diverse theatre ecosystem.

Grants: Social Impact Theatre

Alternative Theatre Ensemble	Perseverance Theatre
Arvada Center for the Arts and Humanities	Portland Center Stage
Autry Museum of the American West	San Francisco Bay Area Theatre Company
Berkeley Repertory Theatre	San Luis Obispo Repertory Theatre
Bindlestiff Studio	Seattle Repertory Theatre
Coachella Valley Repertory	Su Teatro Inc
Curious Theatre Company	The 5th Avenue Theatre
East West Players	Su Teatro Inc
Golden Thread Productions	The Phoenix Theatre Company
Langston	The Theatre at Boston Court
Latino Theater Company	Theatre Communications Group
Lower Depth Theatre	Theatre for Young Audiences
National Alliance for Musical Theatre	Town Hall Arts Center
Ojai Playwrights Conference	Village Theatre
Pasadena Playhouse State Theatre of California, Inc.	

Grantee Partner Spotlight

Native Voices at The Autry Museum of the American West Facilitates A More Inclusive Dialogue About “**What It Means to Be American**” and Launches Plays and Playwrights

Native Voices at The Autry Museum of the American West has a mission to develop and produce new works for the stage by Native American, Alaska Native, Native Hawaiian, and First Nations playwrights. As the country’s only Equity theatre company devoted to this work, Native Voices provides a supportive, collaborative setting for Native theatre artists from across North America and is committed to putting Native narratives at the center of the American story in order to facilitate a more inclusive dialogue on what it means to be American.



“Desert Stories for Lost Girls,” written by Lily Rushing (Genízaro) and directed by Sylvia Cervates Blush

Photo © Grettel Cortes Photography

Grantee Partner Spotlight

DeLanna Studi is a proud citizen of the Cherokee Nation and the new Artistic Director of Native Voices at the Autry. Part of the company for 24 years, she says the company's focus is "addressing systemic issues at the heart of theatre."

To achieve that impact, Native Voices offers events and programming like its Short Play Festival, which presents professional staged readings of ten- to thirty-minute plays centered around a particular theme; its The First Look Series, which offers a script development process that brings playwrights together with professional directors, dramaturgs, and actors; courses in Native dramaturgy; its Young Playwrights Program, which offers eight free online courses for youth across the U.S. and Canada to teach the foundations of playwrighting; and its Director Mentorship Program.

Native Voices is also co-producing with theatres of color, creating four new plays for inter-generational audiences; and commissioning Native writers to create new plays.

The company is committed to expanding its engagement with tribal communities: DeLanna frequently travels to reservations across the United States and Canada, meeting with families who then share information about Native Voices with their communities.

It's all part of the company's long-term vision of seeing more Native playwrights and actors and stage designers.

"The future of Native Voices is finding ways to ensure it's not just Native Voices launching plays and playwrights, but to build a community far beyond our own stage."



Native Voices Artistic Director
DeLanna Studi

Annual Report

2023

☎ 206.535.7543

✉ inquiries@billerfamilyfoundation.org

🌐 billerfamilyfoundation.org



The Sheri and Les
BILLER FAMILY FOUNDATION